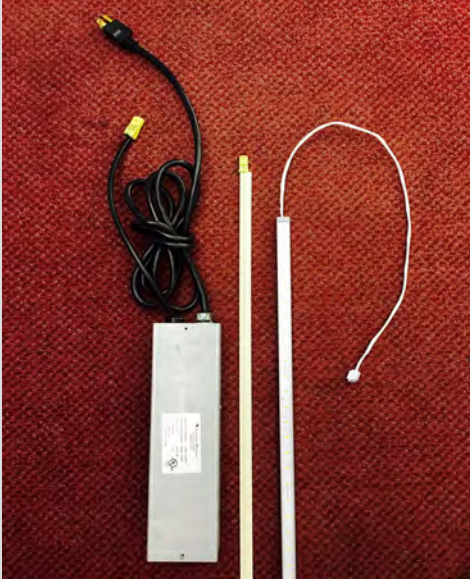


ARDRON QC SHELF LIGHT

Installation is **QUICK** and easy



- Ensure you have adequate electrical power in each base
- Each 4' section requires a driver box, power track and LED magnetic strip lights

- Strip the base and remove base shelf and install driver box
- Do not connect to existing power supply

- From the base slide the power track behind the shelves



- Cut the track to size (cut end opposite of power connector) then slide the power track into the flange of the upright

- The QUICK CONNECT should suspend 3" above the floor

- Install the LED magnetic strip light under each shelf you want to illuminate

For ROI and detailed information please contact us at:

ARDRON QC SHELF LIGHT

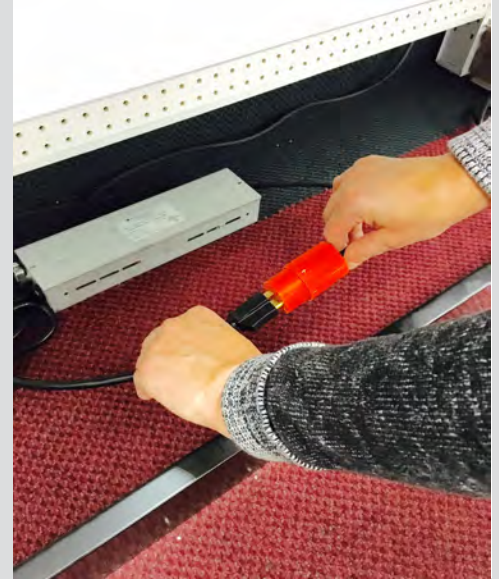
Installation is **QUICK** and easy



- QUICK CONNECT each LED strip into the power track and clean up any additional wiring by using magnet on wire



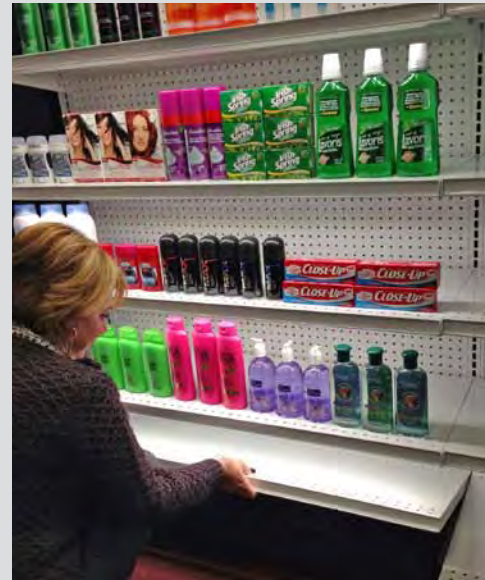
- Join the QUICK CONNECT power track to the driver box



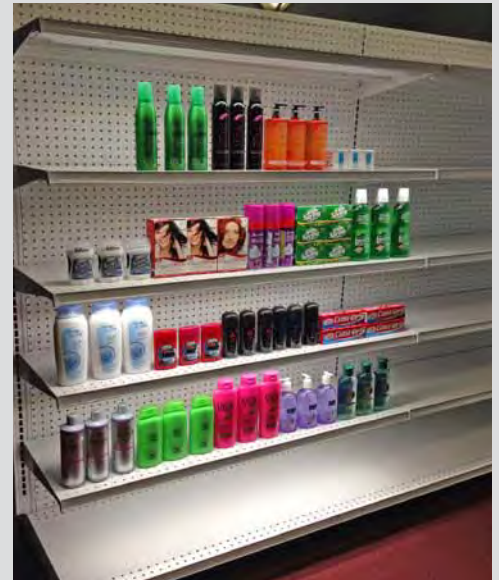
- Plug driver box into receptacle in base (or into receptacle of neighbouring driver)



- Your shelves are illuminated



- Replace the base deck



- Re-merchandise your shelves

For ROI and detailed information please contact us at: